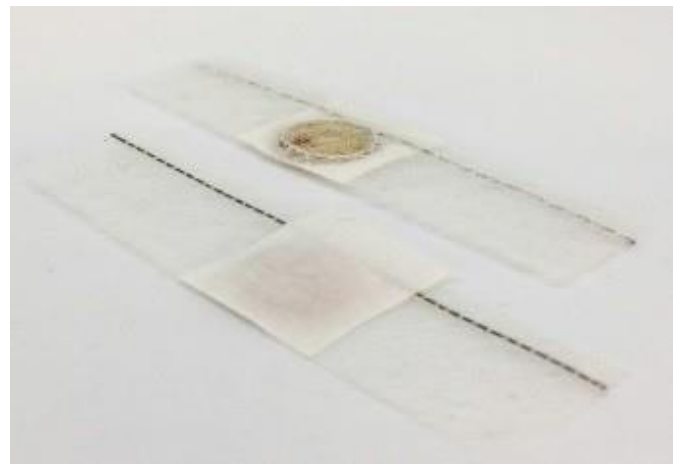


PID-TR Tag

The TR Tyre Tag is a UHF Gen2 passive tag that is designed to be embedded into the tire mold before the tire manufacturing and curing process. This tag is perfect for easily identifying and tracking tires.



Applications



Ordering Information

Part Number	IC Type	Memory Configuration
RFTR-510720	NXP-U code 8	EPC Memory-128 bits



Electrical Specifications

Operational Frequency	FCC: 902-928 MHz ETSI: 865- 868 MHz
Interface Protocol	ISO 18000-63 and EPC global Gen2v2
Chip Type*	NXP U Code 8
Memory Configuration	EPC Memory – 128 bits
Date Retention	50 Years
Write Cycle Endurance	100,000 cycles
Read Range**	Up to 5 meters

Product Characteristics

Tag Size	70.0 x 15.0 x 1.0 mm/2.75 X 0.59 x 0.039 in
Antenna	70.0 x 8.0 mm / 2.75 x 0.31 in
Material	Conductive wire
Packaging	500 Tags / Pkt
Attachment	Embedding
Yield	100 %

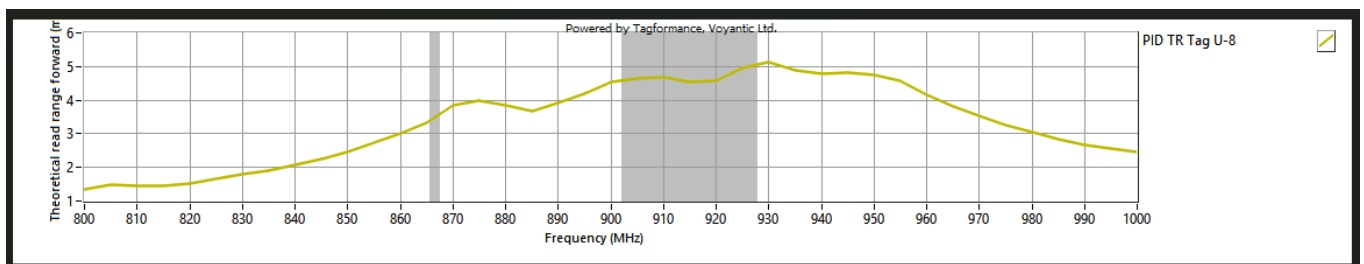
Environmental Specifications

Operating Temperature	-35 to +85°C
Storage Temperature	-40 to +85°C

Personalization

- Customer specific encoding of EPC
- Customized printing of logo, dimension, text, barcode etc.

READ RANGE GRAPH



** The indicated read range values are measured in our laboratory testing environment, where antennas with optimum directivity are used with maximum allowed operating power. Different surface materials and environments may exhibit different results.