

Rock-112

PID Rock tags are tailored as UHF Gen2 Long-range passive tags peculiarly intended to function when affixed to metal objects. They are lucid to implement on any sort of metal surface as they can be tacked through rivets, adhesives, and magnets. They are ideal for assets that are subject to severe conditions such as vibration, shock, chemical exposure, and fluctuating temperatures. They are extensively deployed in factories, warehouses, and automobiles to accomplish their requirements of managing inventory. They offer a prolonged reading range which makes them competent for disparate application areas.



Applications



Warehouse Management



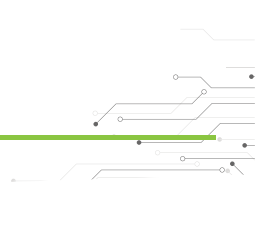
Retail Management



Asset Tracking

Ordering Information

Part Number	Item Details
RFAB-050308-Global	On-Metal Tag tag with R6P IC
RFAB-330208-Global	On-Metal Tag tag with M730 IC



Electrical Specifications

Operational Frequency	FCC: 902-928MHz ETSI: 865- 868 MHz
Interface Protocol	ISO 18000-63 and EPCglobal Gen2v2
Chip Type*	IMPINJ MONZA R6P
Memory Configuration	EPC Memory – 128 bits /96 bits USER Memory – 0 / 32 bits
Data Retention	50 Years
Write Cycle Endurance	100,000 cycles
Read Range**	Upto 14 meter

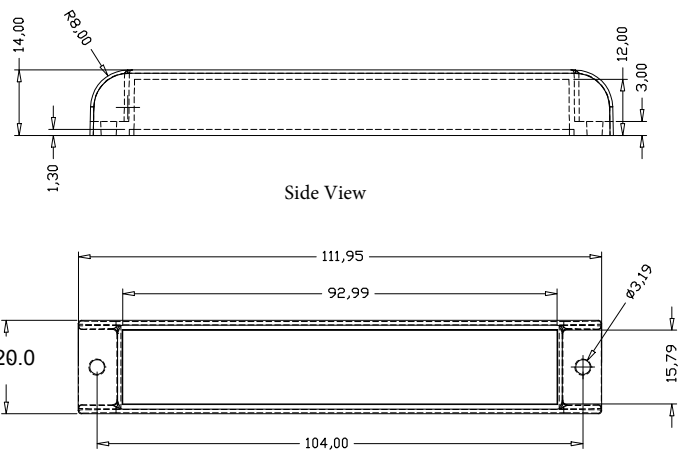
Product Characteristics

Tag Size	112x20 x14 mm +- 0.5mm /4.33 x 0.98 x 0.49 in
Yield	100 %
Material	ABS
Packaging	100 Tags / Packet
Attachment	Screw , Riveting

Environmental Specifications

Operating Temperature	-40 to +85 °C
Storage Temperature	-40 to +85°C
IP Rating	IP67

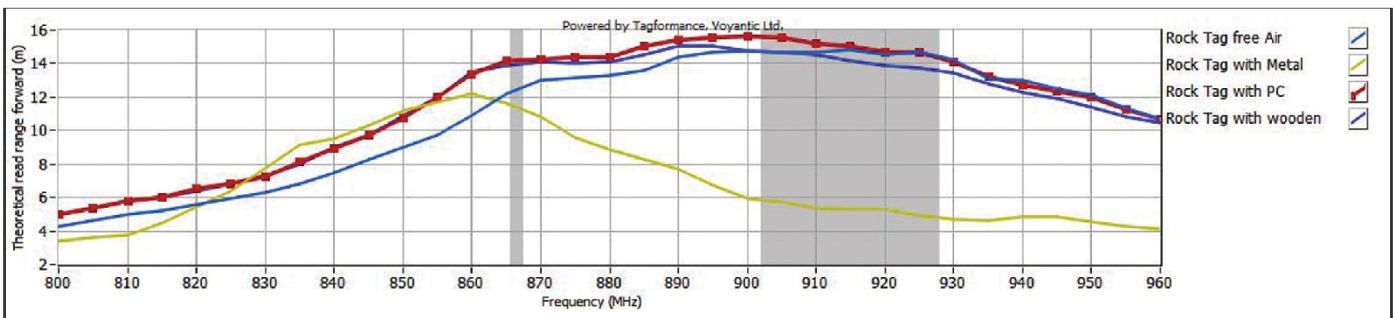
Product Drawing



Personalization

- Customer specific encoding of EPC
- Customised printing of logo, text, barcode etc

READ RANGE GRAPH



PID ROCK 112 - RF performance(R6P)

** The indicated read range values are measured in our laboratory testing environment, where antennas with optimum directivity are used with maximum allowed operating power. Different surface materials and environments may exhibit different results.